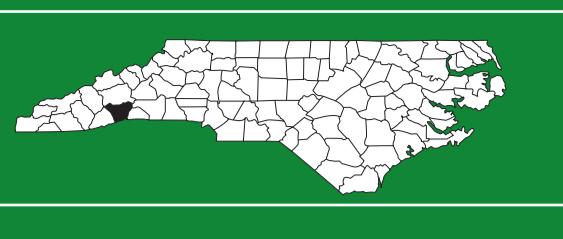


Bicycling Henderson County



About the Map

Whether you take a leisurely bicycle ride, an all-day trip, or a longer overnight tour, this map provides all the information you need for planning your ride along the 184-mile system of highlighted bicycle routes. Four signed routes totaling 106 miles and an additional 78 miles of unsigned connectors provide an endless number of route options.

In addition to showing the bike routes, the map presents a wealth of other information. The locations of all services such as country stores, campgrounds, and restaurants are pinpointed with symbols, defined in the legend. Towns that provide overnight accommodations, restaurants, and other amenities are marked with a star. Points of interest are indicated with a large dot.

All roads that are part of the route system or which cross a route are named. Also clearly marked are busier sections of the routes where additional caution is recommended. On the road, these sections are posted with "Share the Road" signs like the one shown here.



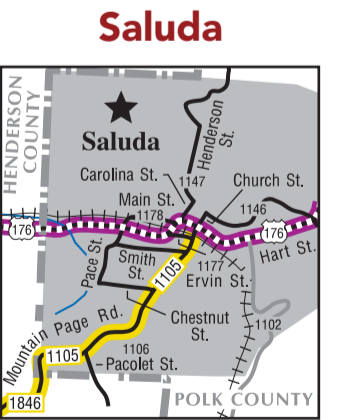
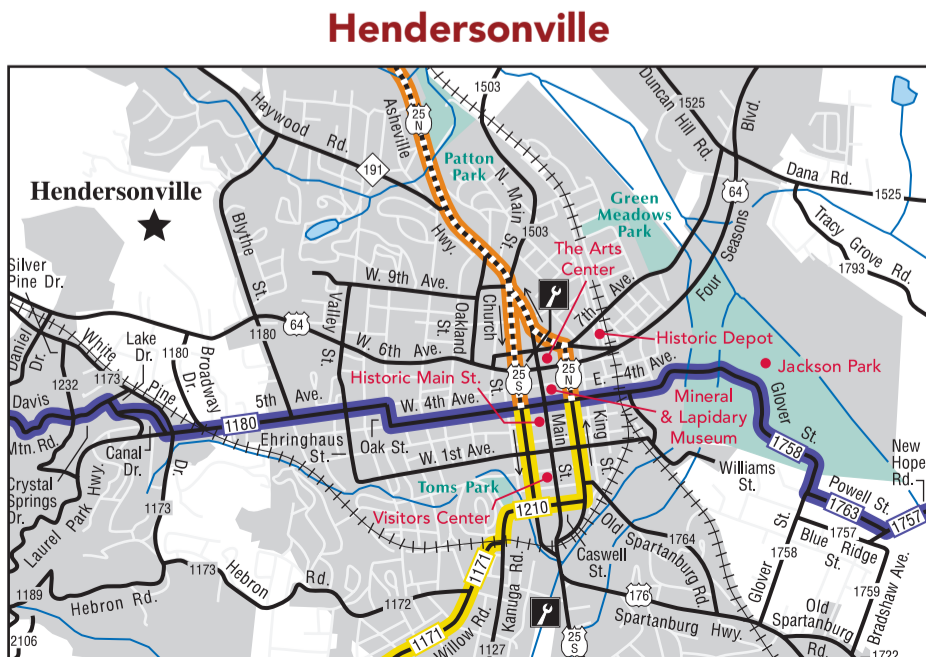
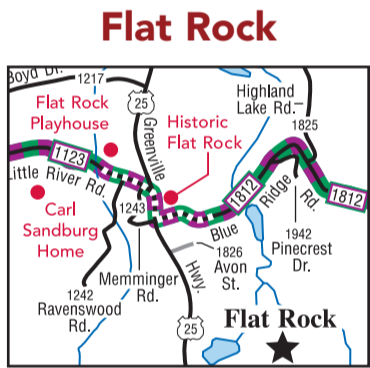
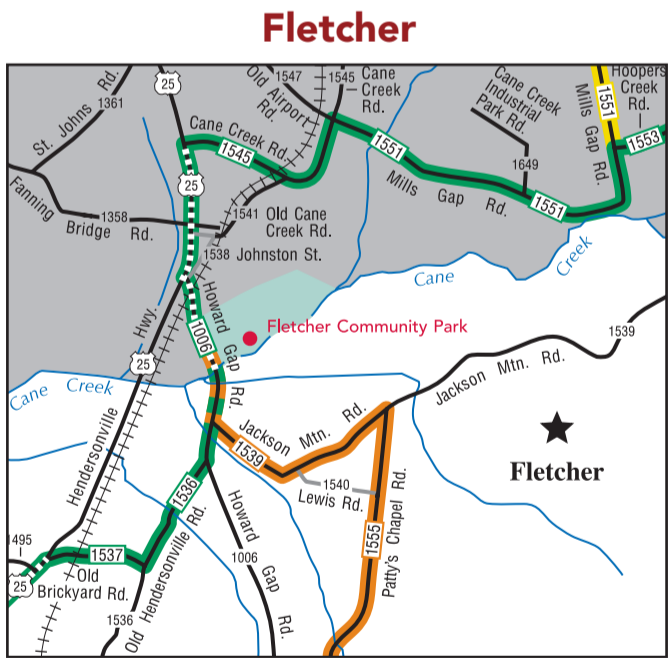
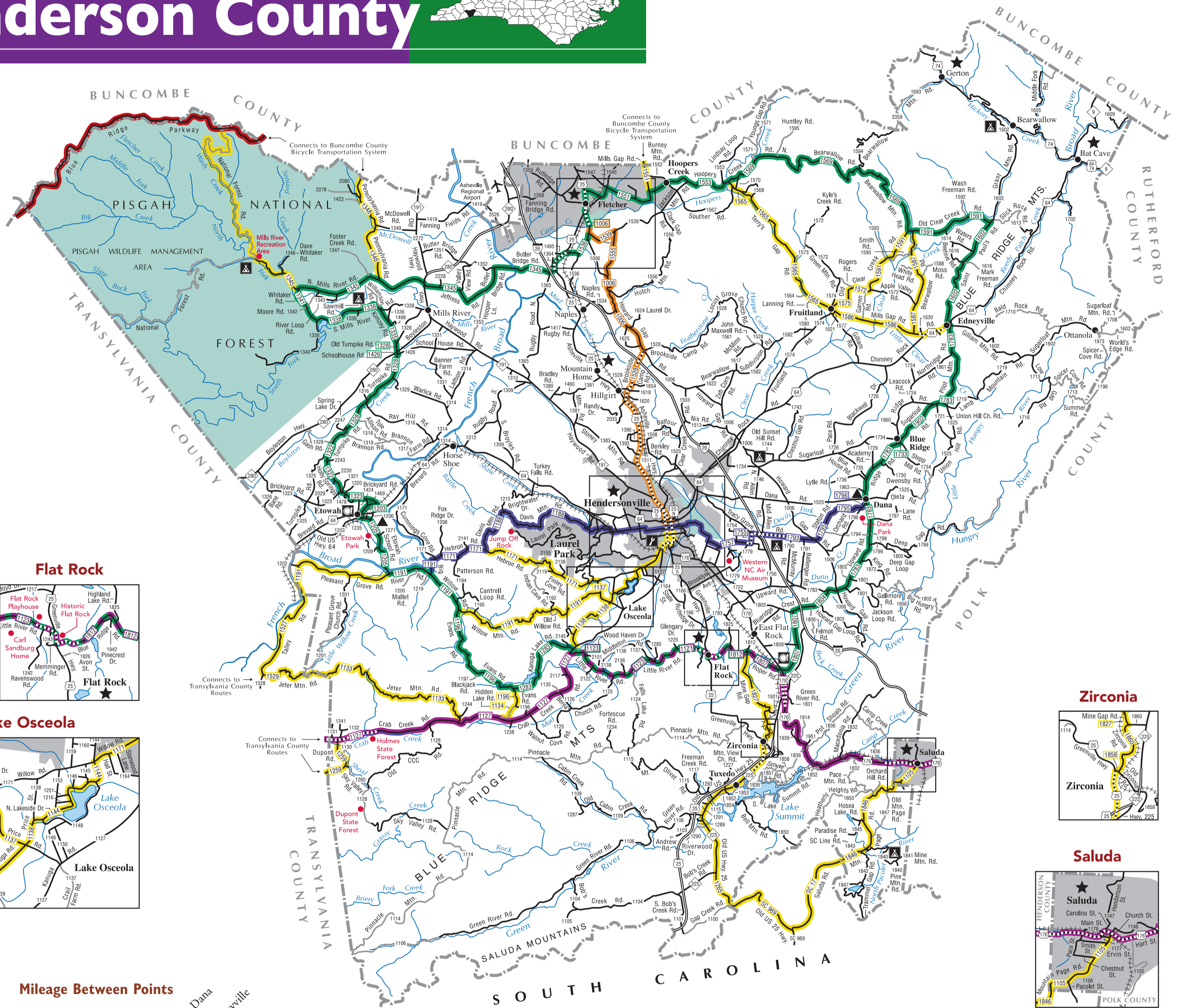
SHARE THE ROAD

Enlarged inset maps of Hendersonville, Lake Osceola, Flat Rock, Zirconia, Saluda, and Fletcher are included to help you navigate these areas and locate points of interest.

Have a safe and enjoyable ride. Please remember to be courteous to other road users.

A Note of Caution

The highlighted routes shown on this map follow roads of the North Carolina highway system and local streets. These roads do not include any special accommodations for bicycles, such as paved shoulders or bike lanes. Care has been taken to select more lightly traveled roads. In a few places, however, segments of more heavily traveled roads are used to make connections where no other options exist. These areas are marked with "Share the Road" signs to alert motorists to the presence of cyclists. The Henderson County bike routes are not designed to be used by children as their ability to judge traffic conditions and driver actions is not well developed.



Mileage Between Points

	Dana	Edneyville	Etowah	Flat Rock	Fletcher	Hendersonville	Saluda	Tuxedo
Edneyville	5.6							
Etowah	17.2	22.8						
Flat Rock	7.8	13.4	13.7					
Fletcher	16.0	12.1	19.4	18.7				
Hendersonville	6.2	11.8	11.0	8.9	9.8			
Saluda	11.9	17.5	21.6	7.9	26.6	16.8		
Tuxedo	10.9	16.5	19.4	5.7	24.4	14.6	10.4	

Distances shown are measured along highlighted routes and may not be the shortest or the most direct way between points.

Legend

- Route 1 - Perimeter Route
- Route 2 - Mountains to Sea Cross-State Route
- Route 3 - East/West Route
- Route 8 - Southern Highlands Cross-State Route
- Unsigned Connector Routes
- Hendersonville to Fletcher Unsigned Connector
- - - Higher Traffic Areas
- Highways
- Paved Roads
- Dirt Roads
- Railroads
- Creeks and Rivers
- Full Service Areas
- Campgrounds
- Restaurants
- Bicycle Shops
- Country Stores
- Points of Interest
- Airport

SCALE FOR COUNTY MAP

SCALE FOR ENLARGEMENTS